

Chevrolet (Push to Start)																
Blazer												19	20	21	22	
Bolt							16	17	18	19	20	21				
Camaro							16	17	18	19	20	21				
Corvette				14	15	16	17	18	19							
Cruze		12	13	14	15	16	17	18	19							
Equinox								18	19	20	21	22	23	24		
Impala				14	15	16	17	18	19	20						
Malibu			13	14	15	16	17	18	19	20	21	22	23	24		
Silverado Limited														22		
Silverado 1500										19	20	21				
Silverado 2500											20	21	22	23		
Silverado 3500											20	21	22	23		
Sonic								17	18							
Spark							16	17	18	19	20	21	22			
Suburban					15	16	17	18	19	20						
Tahoe					15	16	17	18	19	20						
Trailblazer													21	22	23	24
Traverse								18	19	20	21	22	23			
Trax								17	18	19	20	21	22		24	
GMC (Push to Start)																
Acadia								17	18	19	20	21	22	23		
Sierra 1500 Limited														22		
Sierra 1500										19	20	21				
Sierra 2500											20	21	22	23		
Sierra 3500											20	21	22	23		
Terrain									18	19	20	21	22	23	24	
Yukon					15	16	17	18	19	20						
Buick (Push to Start)																
Encore								17	18	19	20	21	22			
Encore GX											20	21	22	23	24	
Envision								17	18	19	20					
Lacrosse	10	11	12	13	14	15	16	17	18							
Regal		11	12	13	14	15	16	17	18	19	20					
Verano			12	13	14	15	16	17								
Cadillac (Push to Start)																
CT6							16	17	18							
CTS					14	15	16	17	18							
CTS-V				13	14	15	16									
Escalade						15	16	17	18	19	20					
SRX	10	11	12	13	14	15	16									
XT4										19	20	21	22	23		
XT5								17	18	19	20	21	22	23		
XT6											20	21	22	23		
XTS				13	14	15	16	17	18	19						

- This remote start will monitor the vehicle lock circuit and use the pulses generated by pressing Lock>Unlock>Lock on your OEM remote to start the vehicle.
- This is a pre-wired "plug & play" kit. No wired connections are required in the vehicle for installation.
- There are other loose wires in the t-harness. They are not used in this installation.
- We have already loaded the correct firmware into the remote start module. You will need to pair the module to your vehicle when the wiring is complete. Programming instructions are on page 5.

Step 1: Download and install Flash Link Manager software

**The Flash Link Manager (FLM) software only works on a Windows computer and requires a USB port and an internet connection. Enter the following link into your web browser, then download and install the software:

<https://fortin.ca/en/support/flashlinkmanager.html>

Next, open the software and log in with the following credentials:

email: flash@kleinn.com **password: Flash2020**

Once the (FLM) software is installed and open, connect the Flash Link Updater to the USB port of your Windows computer. The (FLM) software will detect the Updater and then display a message that the module is not connected - this is normal. Do not plug the remote starter into the (FLU) tool until you have completed the wiring and vehicle programming procedure at step 3. Leave the computer and software in this state ready to plug the module in when the time comes, and proceed with the wiring connections.

Step 2: Plug-In Connections

- Locate the vehicle BCM - See BCM locations below. It is easily identified by the seven colored multi-pin plugs.
- Starting with the White plug at the end - remove the plug from the BCM and insert it into the female White plug in the remote start harness. Then insert the male White plug from the remote start harness back in to that same BCM slot.
- Repeat Step 2b with the Blue and Green plugs. The wiring is now complete.

Locating the plugs in the vehicle

Left of steering column

Chevy/GMC
 19-21 Silverado/Sierra 1500
 22 Silverado/Sierra 1500 Limited
 20-23 Silverado/Sierra 2500/3500
 15-20 Suburban/Tahoe/Yukon
 17-18 Sonic 16-22 Spark

Cadillac
 14-18 CTS 13-16 CTS-V
 15-20 Escalade



Above driver's kick panel

Chevy
 16-19 Cruze 13-15 Malibu
 14-20 Impala 16-21 Bolt
 17-22 Trax 16-21 Camaro
 16-22 Spark

Buick
 17-20 Encore 10-16 Lacrosse
 11-17 Regal

Cadillac
 16-18 CT6, 10-16 SRX, 14-19 XTS



Right side center console

Chevy/GMC
 18-24 Equinox 18-24 Terrain
 18-23 Traverse 17-23 Acadia
 12-15 Cruze 16-24 Malibu
 19-22 Blazer 24 Trax

Buick
 21-22 Encore 22-24 Encore GX
 17-20 Envision 17-18 Lacrosse
 18-20 Regal 12-17 Verano

Cadillac
 19-23 XT4, 17-23 XT5, 20-23 XT6

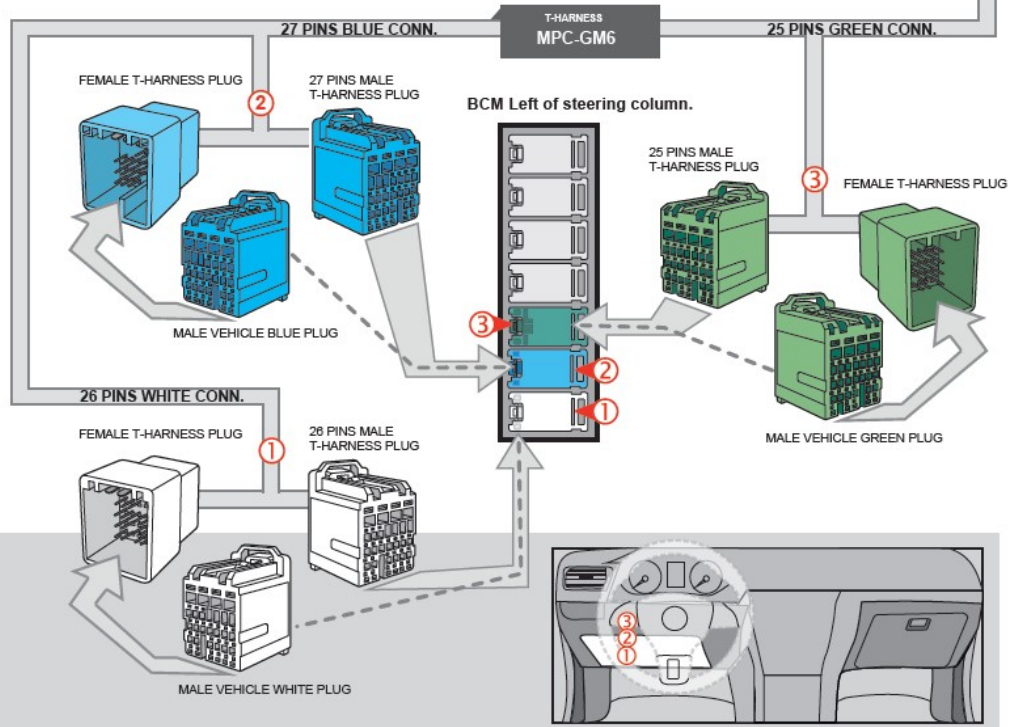
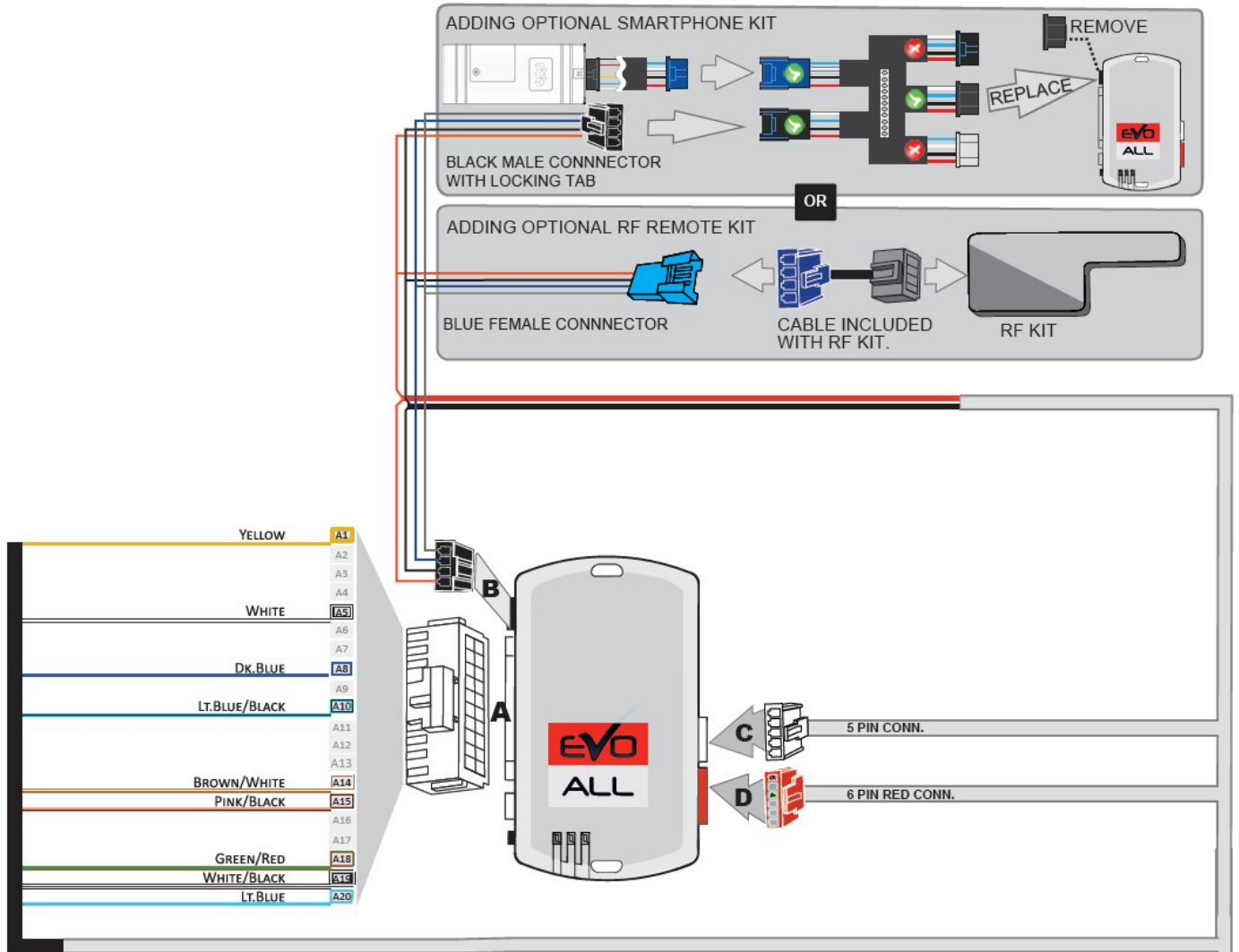


Left side center console

Chevy
 21-24 Trailblazer



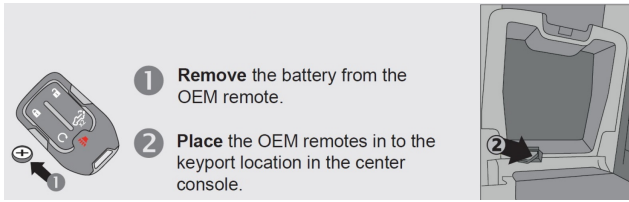
System Wiring Diagram



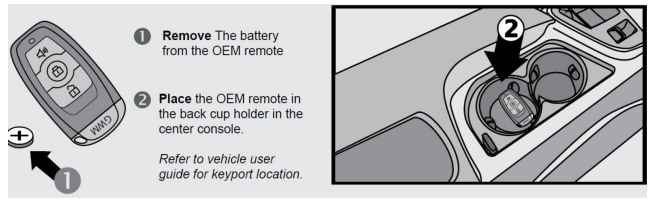
Key Fob location for programming

Key fob location and physical appearance of the key fob may differ slightly from the pictures below based on year and trim level. If you have trouble locating the back up location for the key fob please refer to the vehicle owners manual

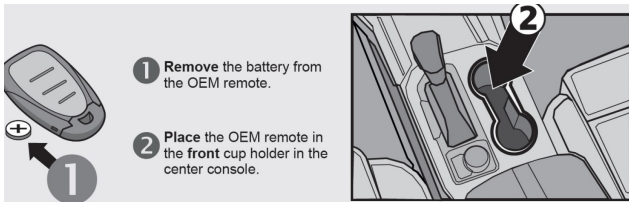
Silverado/Sierra 1500/2500/3500



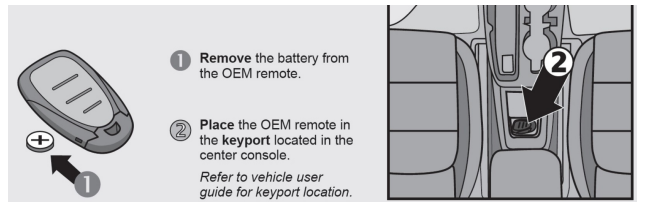
Suburban/Tahoe/Yukon/Escalade/Terrain/CTS (V)



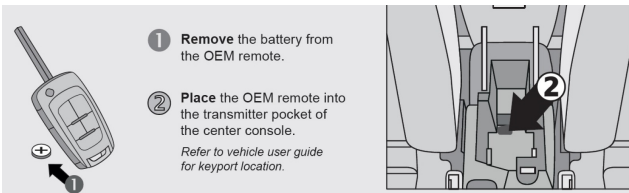
Blazer/Traverse/Equinox/Trax/Sonic/XT4/Envision/17-20 Encore



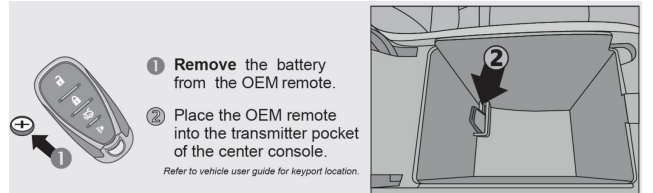
Trailblazer 21-22 Encore



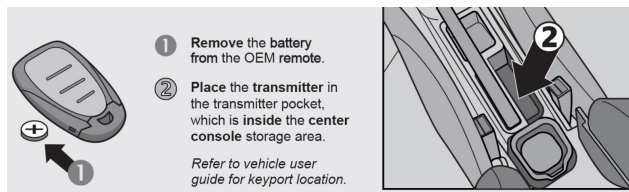
13-15 Malibu



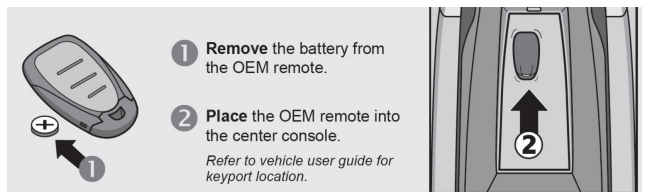
16-24 Malibu Camaro/Verano



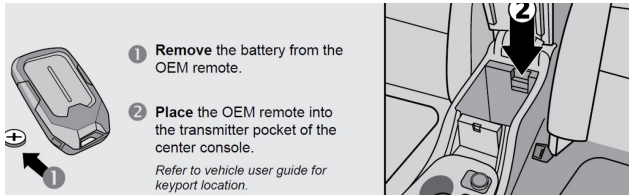
Spark



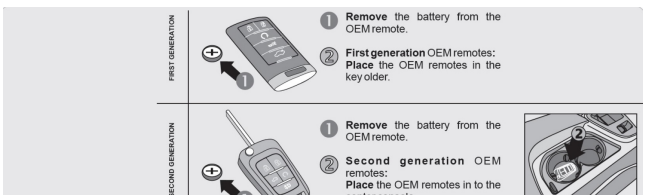
Bolt/Volt



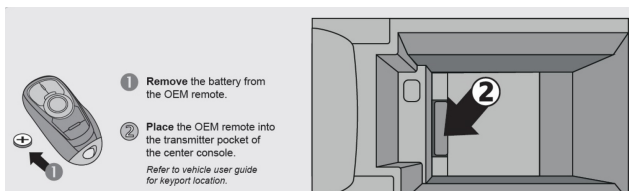
Acadia



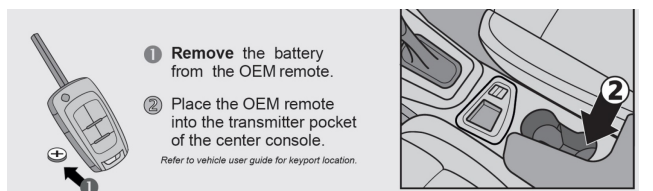
Cruze/Corvette



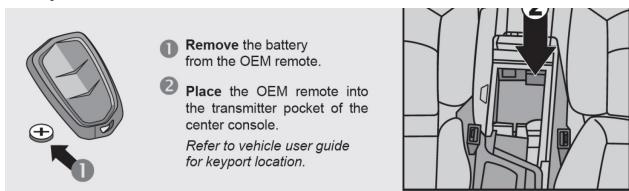
Impala/Lacrosse/XTS



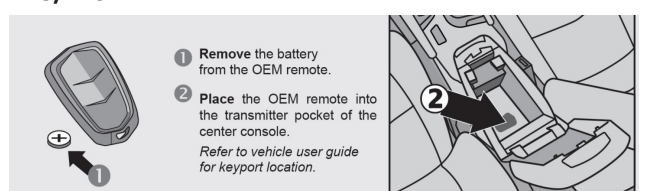
Buick Regal



CT6/SRX



XT5/XT6



- Before starting the programming steps:

1. Plug in only the red 6-pin plug to the EVO-ALL.
2. Remove the battery from the factory key fob.
3. Place the factory key fob in the location shown on the previous page.
4. Press and hold the brake pedal and press the push to start button to start the vehicle
 - a. If the vehicle starts unplug the red 6-pin plug and proceed to the programming steps..
 - b. If the vehicle doesn't start check the key placement (Remove any rubber cup holders, flip key around)
 - c. **Step 4 above must pass to be able to program the module.**

Step 3: Programming

Unplug all the connectors from the EVO module (Black 4 pin plug last), then follow the steps below.

1

x1 HOLD

LED may differ depending on the module casing.
L'apparence des DELS peuvent différer selon le boîtier du module.

Press and hold the programming button:
Connect the 4-PIN Data-link harness (Black connector).

↳ The Blue, Red, Yellow and Blue & Red LEDs will alternately illuminate.

2

RELEASE

ON

Release the programming button when the LED is **YELLOW**.

If the LED is not solid **YELLOW** disconnect the 4-Pin connector (Data-Link) and go back to step 1.

3

Insert the white 20-pin, red 6-pin and white 5-pin connectors.

4

x5

FLASH FLASH FLASH FLASH FLASH OFF

ON

Press and release the programming button five times (5x).

↳ The **YELLOW LED** will alternate between 5x flashes and a pause.

↳ Wait until the **YELLOW LED** turns ON.

5

Open the driver door.

6

x1 PRESS HOLD RELEASE START

IGNITION OFF → START

ON → OFF

ON → ON

Press the foot-brake pedal.

Press the Push-to-Start button until the engine start.

Release the foot-brake pedal.

↳ The **RED LED** will turn ON.

↳ The **YELLOW LED** will turn OFF.

CONTINUED NEXT PAGE

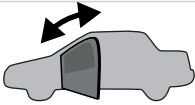
5 | Page

7



Press the Push-to-Start button until the engine turn OFF.

8

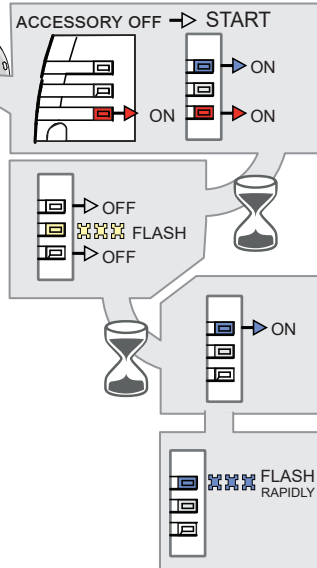


Close and open the driver door.

9



Press the foot-brake pedal.



Press the Push-to-Start button until the engine start.

Release the foot-brake pedal.

↳ The BLUE LED will turn ON.

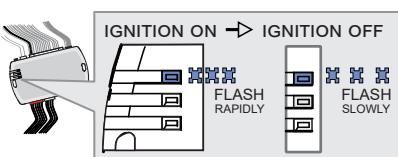
↳ The BLUE LED will turn OFF.
The RED LED will turn OFF.

↳ The YELLOW LED will flash rapidly

↳ The BLUE LED will turn ON.

↳ The BLUE LED will flash rapidly

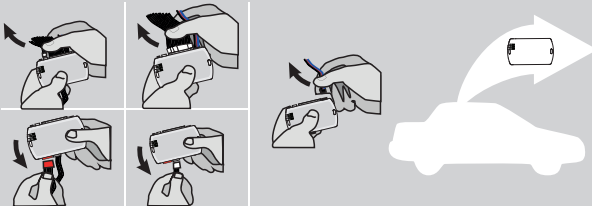
10



Press the Push-to-Start button until the engine turn OFF.

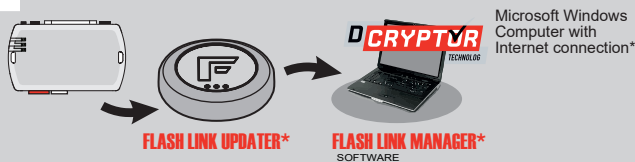
↳ The BLUE LED will flash slowly

11



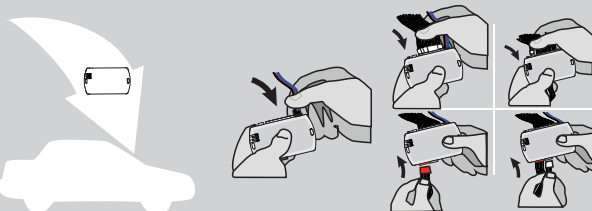
Disconnect all the connectors - do the Data-Link (4-pin) connector last.

12



Use the tool:
FLASH LINK UPDATER

13



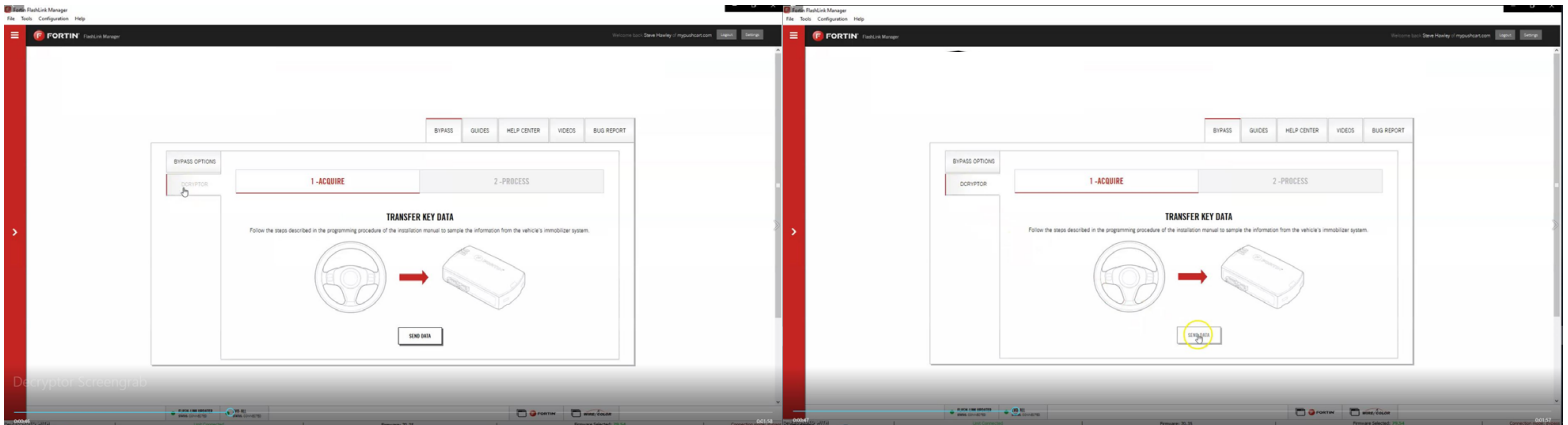
AFTER DCRYPTOR PROGRAMMING IS COMPLETED
Go back to the vehicle and **reconnect** the 4-Pin (Data-Link) connector. The re-connect the white 20-pin, red 6-pin and white 5-pin connectors.

Step 4: Dcryptor

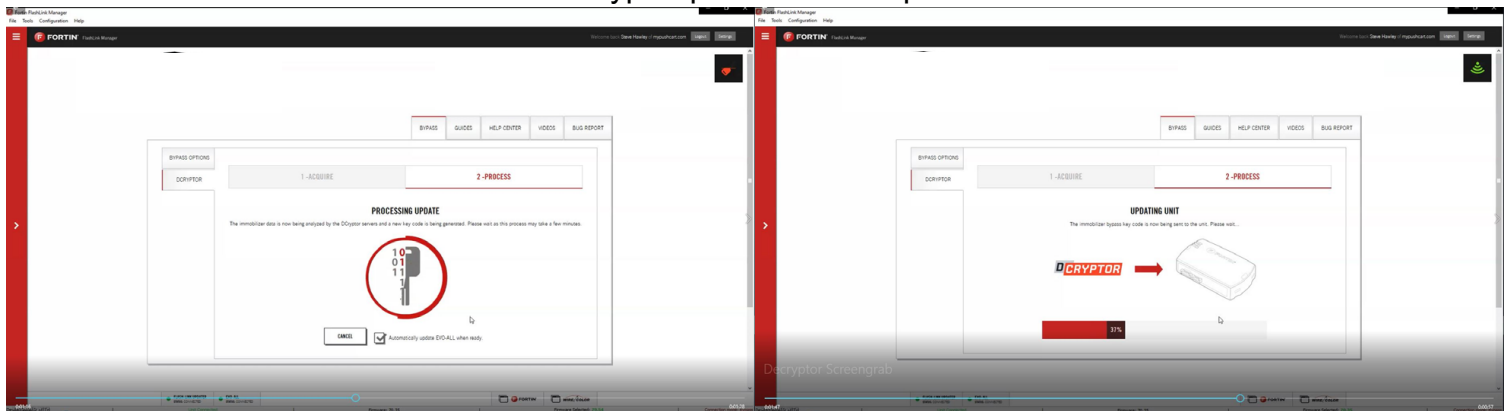
Next, it's time to bring the remote starter module to your computer and plug it into the supplied four-pin plug from the Flashlink Updater (FLU). For a video on how to do these steps visit: www.kleinn.com/flashlink



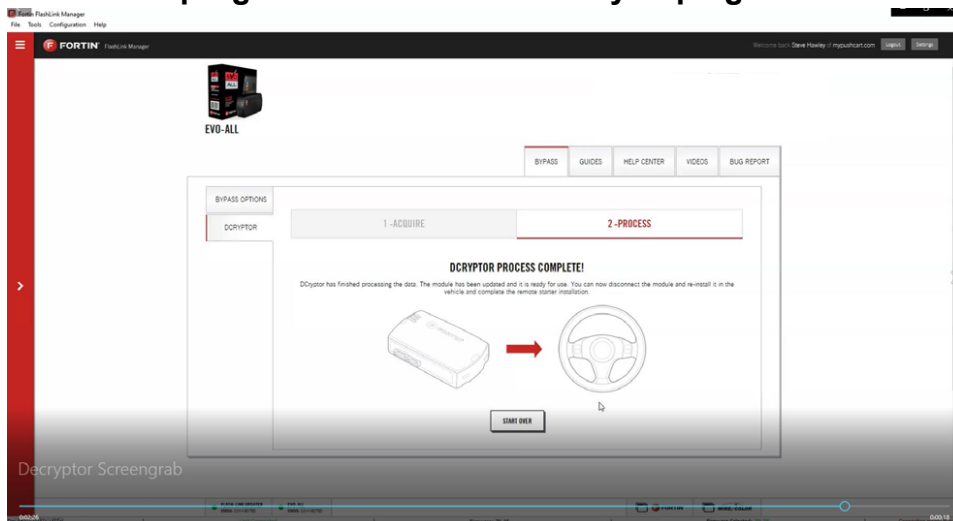
- The software will detect you plugging it in and will automatically load the current settings.
- Next, click the Dcryptor tab. Then click on the Send data button.



Wait while the updater reads data from the remote starter. Once it is done it will update the remote starter and you will need to wait again. You will see a status bar at the bottom of the screen. When it gets to 100%, the Dcryptor process is complete.

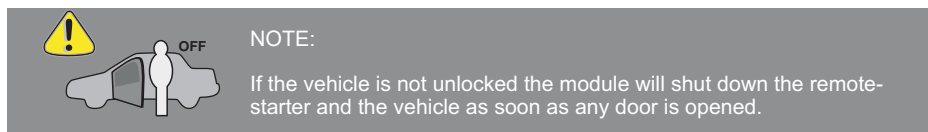
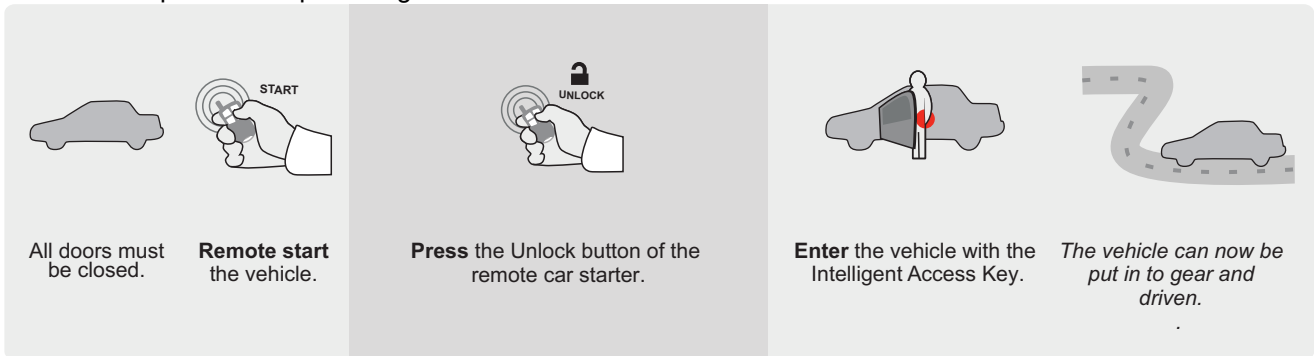


You can now unplug the remote starter module and plug it back into the connectors in your vehicle. Make sure to plug in the power connector first and then the rest of the plugs afterward. **Do not hold the program button down when you plug the connectors back in.**



Step 5: Test the System

1. Press "Lock>UNLOCK>Lock" on your OEM remote control. You will see the Blue light on the remote start module every time you press the Lock or Unlock buttons. Each press should be about 1 second apart. The vehicles ignition/ accessory circuits will turn on after a few seconds. Another few seconds later the starter motor will engage.
2. Step on the brake pedal to stop the engine.



Step 6: Close it Up

Now gather up all of your wiring and neatly bundle it together using zip ties or electrical tape. Find a secure place to put the remote start module and use zip ties to secure it. **Make sure that the remote start wires are not near any moving parts on the steering wheel, pedals or emergency brake! Re-Install any panels that were removed to gain access to the BCM in reverse order they were removed. Be careful not to pinch any wires. ENJOY!**

Parts List

- EVO-ALL Remote Start Data Module
- THAR-GM6 T-Harness

If you have any installation questions or problems, call for tech support

520.579.1531

Copyright 2024 Kleinn Automotive Accessories